

# Fiscal Year 2019 Supplemental Annual Report\*

July 1, 2019 - December 31, 2019



\*Please note that this supplemental Annual Report covers a six-month period as the Luckiamute Watershed Council transitions from a July 1 - June 30 fiscal year to a January 1 - December 31 fiscal year.

## Board of Directors

Patrick Melendy, *President*  
Independence

Wendy Hudson, *Vice President*  
Monmouth

George Grosch, *Treasurer*  
Kings Valley

Karin Stutzman, *Secretary*  
Monmouth

David Ehlers  
Kings Valley / Hoskins

Dan Farnworth  
Monmouth

Kathy Farnworth  
Monmouth

## Staff

Kristen Larson  
*Executive Director*

Suzanne Teller,  
*Outreach Coordinator*

Caleb Price  
*Monitoring Coordinator*

## Project Manager

Jean-Paul Zagarola  
*Bonneville Environmental  
Foundation*

## Featured Project: South Fork Pedee Creek Enhancement



### Project Snapshot

**Goal:** Improve water quality and restore salmonid habitat

**Land Ownership:** Bureau of Land Management (BLM), Hancock Timber Resources, Starker Forests, Inc., Forests Forever, Inc., private residential

**Funders & In-Kind Contributors:** Oregon Watershed Enhancement Board (OWEB), BLM, Hancock Timber Resources, Starker Forests, Inc., Forests Forever, Inc., Western Oregon University (WOU), Falls City High School

### 2019 Accomplishments:

- 319 logs placed in 22 structures along 2.8 stream miles
- Invasive species control within 5 acres of riparian forest
- 1 undersized culvert replaced with bridge
- Multiple data collection efforts, including changes in stream channel, stream temperature, and macroinvertebrate monitoring with WOU Biology students

Like many upper Luckiamute streams, Pedee Creek was significantly impacted by historical logging practices, which resulted in a streambed that had been scoured down to bedrock in many areas; a loss of logjam habitat in the stream channel, and a lack of mature conifers in parts of the riparian area. Additionally, two undersized culverts were holding back valuable spawning gravels and blocking access to an additional 1.5 miles of prime salmonid habitat upstream.

Multiple surveys and water quality monitoring conducted in the Luckiamute watershed within the past 10 years had identified South Fork Pedee Creek as a top priority for protection and restoration based on its geology and high water quality. These data, along with the cooperation and contributions of multiple partners, helped secure \$121,684 in OWEB grant funding in 2019.

The South Fork Pedee Enhancement project is a prime example of how the LWC strives to bring together many stakeholders towards achieving the common goal of long-term watershed health. The restoration of this creek would not have been possible without the participating funders, public agencies, private landowners, local nonprofits, and local schools who stepped up to contribute their dollars, time and expertise towards this project. You can read more about this project at <https://www.LuckiamuteLWC.org/sfpedee.html>



## THANK YOU to Spiritopia and our Community Crush volunteers!

On September 14, 2019, dozens of volunteers came out to for a fun day of apple picking and cider pressing at Spiritopia's distillery near E.E. Wilson Wildlife Area. As a member of our Business Circle, Spiritopia is a proud supporter of watershed health. Learn more about our Business Circle members at [www.LuckiamuteLWC.org/business-circle](http://www.LuckiamuteLWC.org/business-circle)

Your Land. Your Rivers. Your Community. Your Watershed.

## Volunteers Plant Trees to Help Salmon, Orca



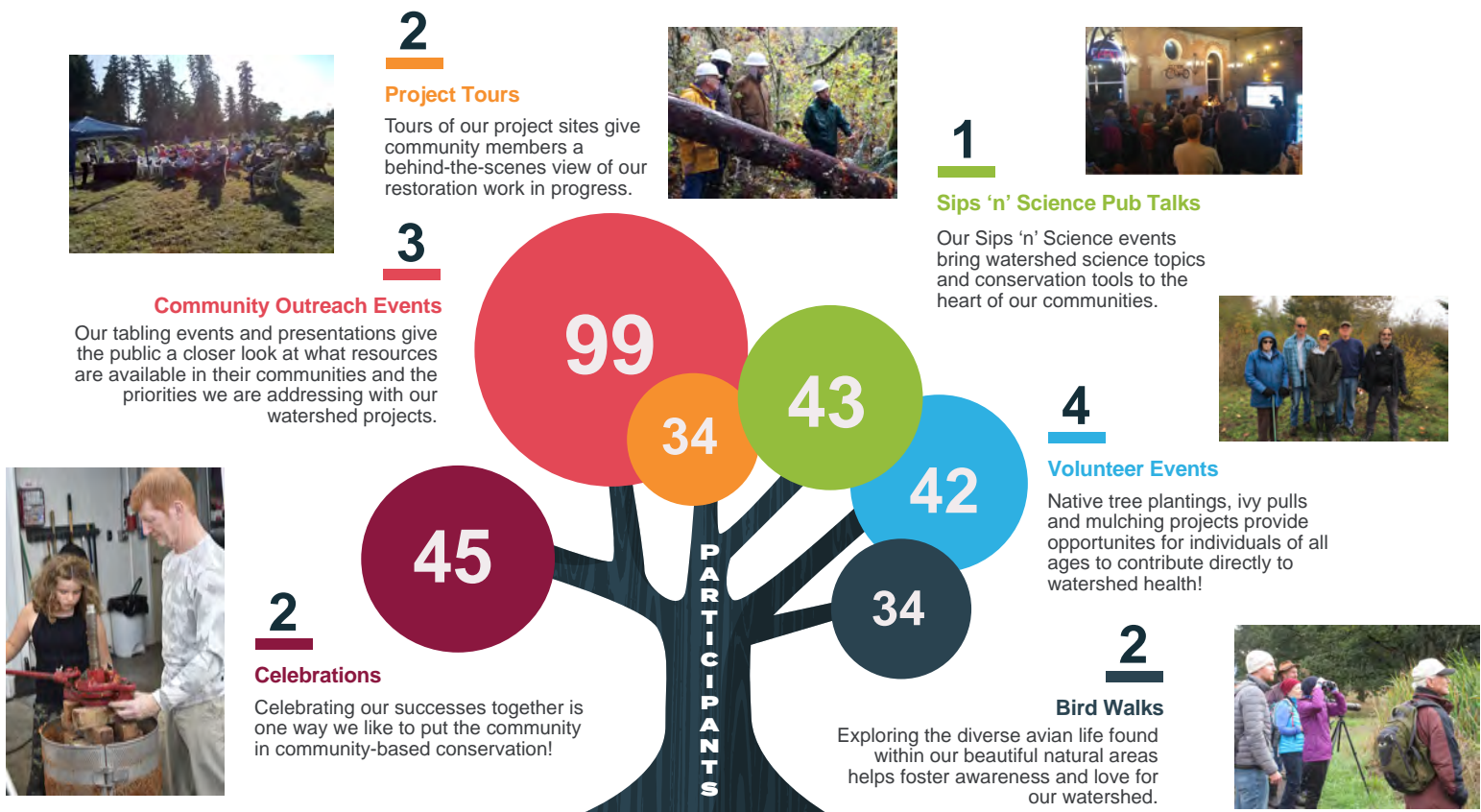
Left to Right: LWC Outreach Coordinator Suzanne Teller prepares live native tree stakes for planting. Oregon State University students pose for a shot while planting a willow. Two volunteers navigate the bank alongside Ash Creek, just a few meters from where it joins the Willamette River. A group shot of the hard-working volunteers who came out for our Orca Recovery Day planting day!

This year, the LWC joined Conservation Districts and dozens of partner organizations from British Columbia to Northern California to hold volunteer habitat restoration events for Orca Recovery Day on October 19, 2019. Critically endangered Southern Resident Killer Whales rely on clean water and healthy salmon populations for their survival, meaning that collective action to protect and restore the health of our streams can make a real difference.

For Orca Recovery Day, the LWC partnered with Bonneville Environmental Foundation, One Tree Planted and the City of Independence to host a volunteer willow staking event at Riverview Park, where a pump replacement project had disturbed the banks of Ash Creek and removed native vegetation. That day, 18 volunteers joined us to plant 240 live cuttings from locally sourced willow, dogwood, Pacific ninebark and Douglas spirea alongside this perennial stream, which flows through the cities of Monmouth and Independence before emptying into the Willamette River. If you would like to be informed about upcoming events like this, make sure to sign up for our volunteer alerts at <https://www.LuckiamuteLWC.org/subscribe.html>

## Love Your Watershed Events

From July through December 2019, *Love Your Watershed* events engaged 297 people across 14 events. See the infographic below for a closer look at how we are inspiring and empowering our communities to take action for watershed health, one individual at a time!



2

### Project Tours

Tours of our project sites give community members a behind-the-scenes view of our restoration work in progress.



1

### Sips 'n' Science Pub Talks

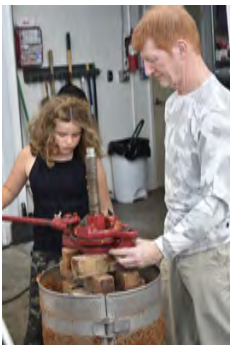
Our Sips 'n' Science events bring watershed science topics and conservation tools to the heart of our communities.



3

### Community Outreach Events

Our tabling events and presentations give the public a closer look at what resources are available in their communities and the priorities we are addressing with our watershed projects.



2

### Celebrations

Celebrating our successes together is one way we like to put the community in community-based conservation!

4

### Volunteer Events

Native tree plantings, ivy pulls and mulching projects provide opportunities for individuals of all ages to contribute directly to watershed health!



2

### Bird Walks

Exploring the diverse avian life found within our beautiful natural areas helps foster awareness and love for our watershed.

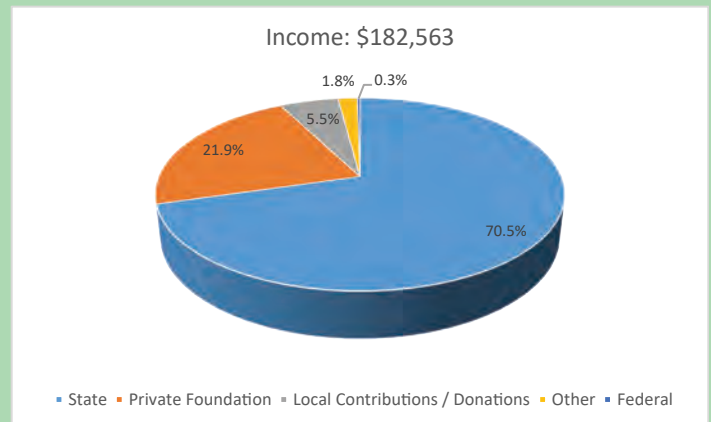


## Income and Expenses July 1, 2019 - December 31, 2019

This annual report covers a six-month, transitional fiscal year. The LWC was in the process of shifting reporting periods from a July 1 through June 30 fiscal year to a January 1 through December 31 fiscal year. This shift resulted in a six-month transition period.

### Income

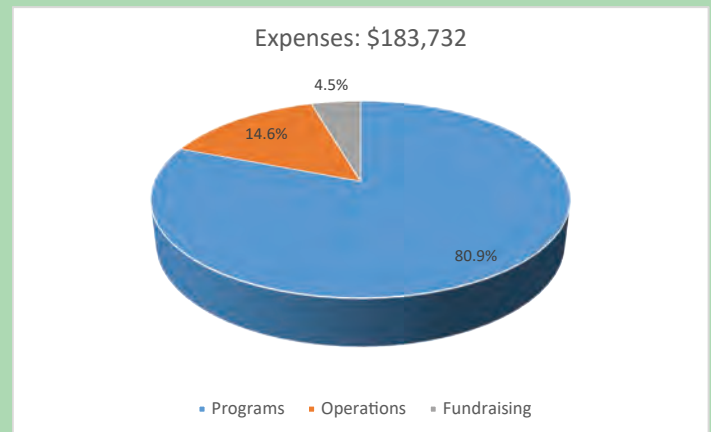
State	\$128,659
Private Foundation	\$40,019
Local Contributions / Donations	\$10,115
Other^	\$3,303
Federal	\$468
<b>Total Income</b>	<b>\$182,563</b>



^Other includes revenue from interest, event registration, other grants, office sub-lease rental payments, and other miscellaneous revenue.

### Expenses

Programs	\$148,643
Operations	\$26,743
Fundraising	\$8,345
<b>Total Expense</b>	<b>\$183,732</b>



<b>Income - Expense</b>	<b>\$(1,168)</b>
-------------------------	------------------

Values are based on the LWC's Statement of Financial Activities for July 1, 2019 through December 31, 2019.

Revenue received in this fiscal year can be spent in the same fiscal year or reserved for use in future years based on project and grant timelines.

*We would like to thank the following funding partners for their contributions to our projects and outreach programs this year. We could not have accomplished our goals without their generous support!*

State Funding Sources: Oregon Watershed Enhancement Board, Oregon Parks and Recreation Department, Oregon Department of Fish and Wildlife

Private Foundations: Meyer Memorial Trust, Amazon Smile Foundation

Local Partners and Other Grants: Ash Creek Water Control District, Polk County Fire District Number 1, Polk Soil and Water Conservation District, City of Independence, Monmouth-Independence Rotary Club, The Nature Conservancy - PGE Habitat Support Funds, Contract Revenue, SOLVE

Federal Funding Sources: Bonneville Power Administration

## July 1, 2019 - December 31, 2019 Donors and Volunteers

*Thank you to all of our supporters and volunteers!*

### **Luckiamute Benefactors (\$1000 - \$4999)**

David & Sarah Ehlers

### **Confluence Champions (\$500 - \$999)**

Wendy Hudson  
One Tree Planted  
Trillium Forests, LLC

### **River Allies (\$250 - \$499)**

Dan & Kathy Farnworth  
*in memory of Mr. Barkley*  
Mid-Willamette Fly Fishers  
Pat & Andrea Melendy  
Terry Murphy

### **Tributary Donors (\$100 - \$249)**

Michael Baltzley  
George Grosch & Ann Bowen  
Ken & Paula Hale  
Mark & Marcella Henkels  
Charles Holstine & Hollis  
Fishelson-Holstine  
Stephen & Ava Howard  
Thomas Hewes & Audrey  
Perkins  
Linda & Joe Hillesum  
Danny & Renee Jaffer  
Chris & Lisa Jaramillo  
Paige Jenkins  
Chris & Kathy Jensen  
Judy Maule

Gail Oberst & Michael  
Cairns  
Bill Percy  
John & Sandra Potter  
Spiritopia  
*Anonymous Donors*

### **Stream Supporters (\$25 - \$99)**

John & Regina Auer  
Judy Beebe  
Emmylou Boyle  
Donald & Frances Brostrom  
Ron Cooper & Ingrid Saltvold  
*in Memory of Mike Moon*  
Tom & Miriam Forney  
Golden Valley Farms  
Bootsie Grakal  
Steve & Nadine Grubb  
Michael & Kimberly Heggen  
Becky Jay  
Jenny Lupton  
Russell & Becca Meskridge  
*in Honor of Glo Wilson*  
Peter & Stacy Moore  
Sally Morris  
Terry Murphy  
Mark & Hazel Niles  
Suzanne Ortiz  
Kathy Patterson  
Jerry & Judith Paul  
Jack & Grace Rye  
Sharon Safina  
Linda Samuels

Schmidt Family Forest, LLC  
Cynthia Spencer  
Suzanne & Jay Teller  
Sarah Uebel & Brett Reistad  
Gerald Weisensee  
Nannette Willis  
*Anonymous Donors*

### **Creek Contributors (Up to \$24)**

Cheryl Gaston  
Stephen & Anne Scheck  
Will Oberst

### **Volunteers**

Dannelle Aleshire  
Ahmed Alhashmi  
Jenny Ammon  
Nathan Anderson  
Judy Beebe  
Marc Bell  
Zoey Boisen  
Erin Burns  
Rob Burns  
Elise Clote  
Raymundo De La Torre  
Scott Donaldson  
David Ehlers  
Sarah Ehlers  
Maddie Fuhrman  
Cheryl Gaston  
Kim Gray  
Patti Gray

### **Volunteers (cont'd)**

George Grosch  
Sarah Hamilton  
Hailey Hardcastle  
Mark Hazelton  
Linda Hillesum  
Joe Hillesum  
Wendy Hudson  
Stephanie Juarez  
Ivan Kosovan  
Phil Larsen  
Patrick Melendy  
Erika Meusch  
Jackson Morgan  
Terry Murphy  
David Olson  
Margaret Olson  
Joelle Perez  
Eric Prescott  
Amanda Robinson  
Sharon Safina  
Heather Schrock  
Yilian Shuai  
Karin Stutzman  
Jane Tappen  
Jay Tappen  
Jay Teller  
Jayson Teller  
Oliver Teller  
Jason Vettrus  
Tom Wilson  
Jean-Paul Zagarola  
Lora Zagarola

### **Thank you to our Business Circle Members!**



Hancock Forest Management  
KWIP AM 880 (La Campeona)  
Starker Forests, Inc.  
Croft Vineyards  
Spiritopia  
Les Schwab Tire Center



**Your Land. Your Rivers. Your Community. Your Watershed.**