



# Luckiamute Watershed Council Fiscal Year 2012 Annual Report

July 1, 2011—June 30, 2012

## Current LWC Board

- **At-large:** George Grosch (*Chair*), Gail Oberst (*Vice Chair*)
- **Water Resources/Water Control:** Suzanne de Szoeko, Dan Farnworth (*Treasurer*)
- **Education:** Karin Nembach (*Secretary*)
- **State:** Steve DeGoey
- **Watershed Resident:** Ron Nestlerode, Rob Burns
- **Agriculture:** Kelly Gordon
- **Small farms and forests:** Ed Miller
- These and other volunteers dedicated more than 800 hours to the Council and community! Thank you!



LWC Volunteers clean up along Buena Vista Road in Polk County.



Contractors work on the Luckiamute River Bridge Piers Modification

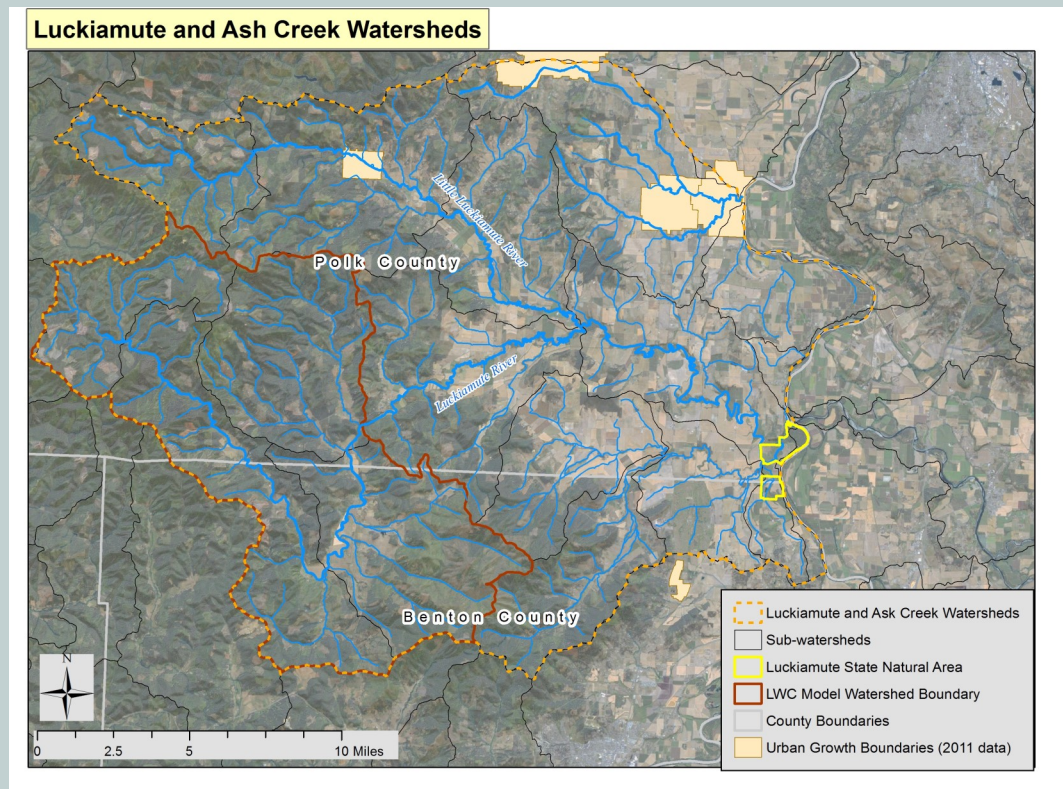
## Our Watersheds at a Glance

The work area of the Luckiamute Watershed Council (LWC) spans Polk and Benton Counties and includes all the land that drains to the Little Luckiamute and Luckiamute Rivers, Ash Creek and the American Bottom area. This is about 366 square miles or 234,240 acres and includes almost 470 miles of streams and rivers. Over seventy percent of our work area is in Polk County.

Our watersheds host cutthroat and steelhead trout, Coho salmon and provide rearing habitat to Chinook salmon near the Willamette River. Pacific and Brook lamprey also make our rivers their home as do a myriad of other plant and animal species in both aquatic and terrestrial habitats.



Camas blooming in the Luckiamute Watershed



## Helping Our Rivers From the Headwaters to the Confluence

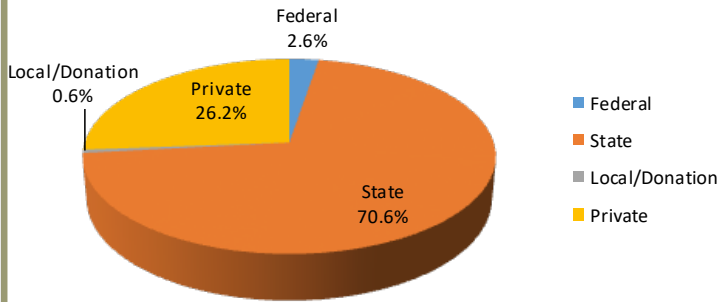
Since 2010, through the Willamette River Initiative, the LWC has focused attention on the upper portion of the watershed (“Model Watershed”) and at Luckiamute State Natural Area (LSNA) at the confluence of the Luckiamute and Willamette Rivers.

## Fiscal Year 2012 Accomplishments

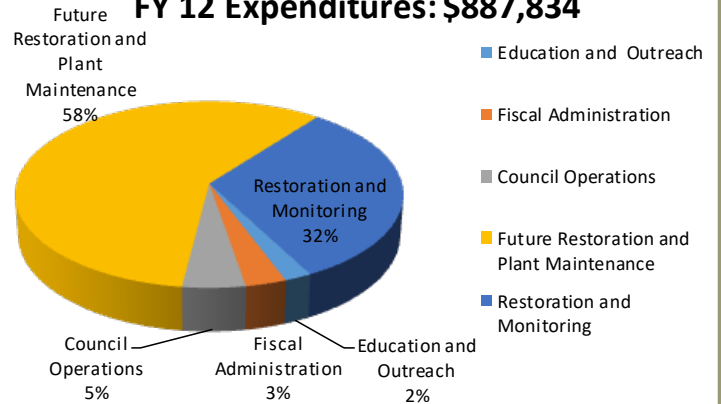
- |   |  |
|---|--|
| <ul style="list-style-type: none"> <li>• Modified bridge piers in the upper Luckiamute River to remove fish passage barriers and improve in-stream habitat</li> </ul>                                     | <ul style="list-style-type: none"> <li>• Began the preliminary survey work for the Side Channel Reconnection Project</li> </ul>                                |
| <ul style="list-style-type: none"> <li>• Contributed to a Willamette-wide GIS/database project through coordination with Bonneville Environmental Foundation</li> </ul>                                   | <ul style="list-style-type: none"> <li>• Continued the bi-annual cleanup of Buena Vista Road near LSNA through the Polk County Adopt-a-Road Program</li> </ul> |
| <ul style="list-style-type: none"> <li>• Expanded the fight against Japanese knotweed with a grant from the Oregon State Weed Board—for a total of 20 miles or approximately 180 acres treated</li> </ul> | <ul style="list-style-type: none"> <li>• Cleared and planted 14 acres of the Model Watershed and installed 24,000 native plants</li> </ul>                     |
| <ul style="list-style-type: none"> <li>• Cleared and planted 80 acres of Luckiamute State Natural Area and installed 112,485 native plants</li> </ul>   | <ul style="list-style-type: none"> <li>• Completed a 4-year bio-assessment of our streams and rivers</li> </ul>  |

# Funding and Expenditures

## FY 12 Revenue: \$887, 834



## FY 12 Expenditures: \$887,834



Revenue and expenses are funds of the LWC's fiscal sponsor, Cascade Pacific RC&D, a nonprofit corporation, exempt from federal tax under section 501(c)(3) of the Internal Revenue Code. Funds were directed to projects and activities managed by the LWC. All values reported based on June 30, 2012 financial statements provided by Cascade Pacific RC&D.

**Public Funding Sources:** Oregon Watershed Enhancement Board (OWEB), Bureau of Land Management (BLM), Oregon Department of Agriculture (Oregon State Weed Board)

**Private Funding Sources:** Meyer Memorial Trust, Oregon Community Foundation, National Fish and Wildlife Foundation

**Other Funding Sources:** Donations, volunteer time, and in-kind contributions are valuable to our projects and operations and help us to secure new grants.

### Revenue

Federal	\$23,340.00
State	\$627,241.63
Local/Donation	\$4,899.32
Private	\$232,352.92
<b>Total Revenue</b>	<b>\$887,833.87</b>

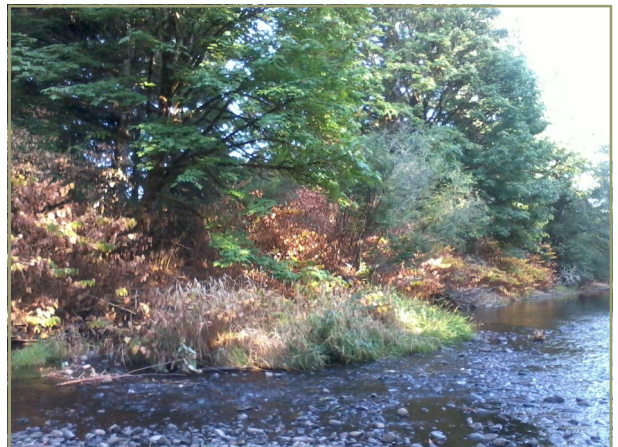
### Expense by Type

Education and Outreach	\$18,021.40
Fiscal Administration	\$27,173.46
Council Operations	\$41,626.77
Restoration and Monitoring	\$281,722.40
<b>Total Expense</b>	<b>\$368,544.03</b>
<b>Revenue - Expense</b>	<b>\$519,289.84</b>

*Surplus held for Future Restoration and Plant Maintenance Expenses*



Above: LWC Project Manager describes restoration work in progress at Luckiamute State Natural Area during a tour, November 2011.



Right: Knotweed along the upper Luckiamute River shows effects of treatment after the first season of control in the Model Watershed, October 2011.



**Luckiamute Watershed Council**

E-mail: [info@luckiamutelwc.org](mailto:info@luckiamutelwc.org)  
Web: [www.luckiamutelwc.org](http://www.luckiamutelwc.org)

226 S. Main St. Suite L  
Independence, OR 97351  
Tel: 503-853-0237

**HELPING PEOPLE HELP  
THEIR WATERSHEDS**