

Board of Directors

- Patrick Melendy (President)
Independence
- Kathy Farnworth (Secretary)
Monmouth
- Dan Farnworth (Treasurer)
Monmouth
- David Ehlers
Kings Valley / Hoskins
- Mark Hazelton
Kings Valley / Hoskins
- Wendy Hudson
Monmouth
- Karin Stutzman
Monmouth



A group of volunteers helped a local boy scout complete his Eagle Scout project—planting trees and protecting them from deer browse along Ash Creek, March 2018.



Greg Archuleta, member of the Confederated Tribes of the Grand Ronde, describes traditional uses of thimbleberry on an ethnobotany hike at Beazell Memorial Forest, June, 2018.



Luckiamute Watershed Council Fiscal Year 2018 Annual Report

July 1, 2017 — June 30, 2018



Featured Project: NetMap Habitat Analysis

The Luckiamute Watershed Council's mission is to engage and assist landowners and communities in the voluntary protection, restoration, and enhancement of the Luckiamute and Ash Creek watersheds. All together, the LWC's service area encompasses about 369 square miles in parts of Polk and Benton Counties. There are hundreds of stream miles and a myriad of opportunities to protect, restore, or enhance a part of the watershed.

In order to most effectively invest limited time and grant funding to achieve the greatest benefit, the LWC secured a technical assistance grant from the Oregon Watershed Enhancement Board (OWEB). Armed with \$44,206 in grant funds and commitments from a team of experts to help with the process, the LWC contracted TerrainWorks to put their NetMap product to work.

NetMap is a set of computer tools that are used with geospatial software to perform analyses and modeling on a stream network. Using a very detailed model of the surface of the watershed, TerrainWorks creates a stream layer with data attached to each 100 meter reach of stream in the watershed. Data points such as slope, floodplain width, drainage area, erosion potential, and many others can then be analyzed to answer questions.

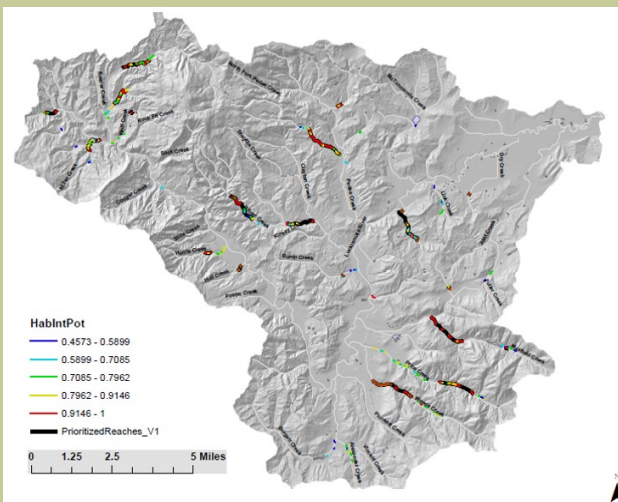
The LWC worked with a Technical Team composed of experts in geomorphology, fish biology, hydrology, and Geospatial Information Systems (GIS) to conduct an analysis that would identify the stream reaches with the most potential to provide quality fish habitat for all life stages, or "anchor habitats", with an

emphasis on steelhead trout.

By defining optimal ranges for stream gradient, floodplain width, depth, and incorporating historical data from the LWC's snorkel surveys, the model pointed to specific sections of streams in the watershed that would benefit the most from restoration projects.

The LWC then worked with a fish biologist familiar with the watershed to visit the top tier of the priority reaches and check the results. The model proved to be highly accurate based on field visits.

The image below is for the western portion of the Luckiamute watershed and identifies target areas for restoration projects. This map guides the LWC's landowner outreach, project development, and funding investments for in-stream restoration projects, ensuring precious resources are dedicated where they will be most effective.



Many thanks to OWEB and project partners including Bio-Surveys, LLC, Bonneville Environmental Foundation, Bureau of Land Management, Oregon Department of Fish and Wildlife, Western Oregon University, participating private landowners, and the LWC's Project Review Committee volunteers for assistance on this project.

Fiscal Year 2018 Accomplishments at a Glance

- **Planted** 22,400 native trees and shrubs across 59.5 acres along the Luckiamute River and its tributaries.
- **Initiated a strategic planning effort** with a survey of over 60 partners and local organizations to help inform development of the plan through 2018.
- Launched the **Friends of the LWC**, with 111 charter members, to build community and support around the mission of the LWC.
- **Monitored** stream temperature at 31 sites along the Luckiamute River and its tributaries—collecting data to inform decision-making and project prioritization.
- Continued **stewardship of 437 acres** of restored riparian and floodplain forests in our watershed, including newly planted acreage.
- Hosted or co-hosted **10 educational events attended by 341 participants**, including project and wildlife tours, pub talks, plant hikes, and workshops.
- Organized **10 volunteer events** such as tree plantings, 4th of July Parade cleanup, Adopt-a-Road, and weed pulls. Over 130 volunteers contributed 582 hours.
- Conducted an **analysis of floodplain restoration opportunities** at Luckiamute State Natural Area to inform restoration project planning.

Income and Expenses

July 2017—June 2018

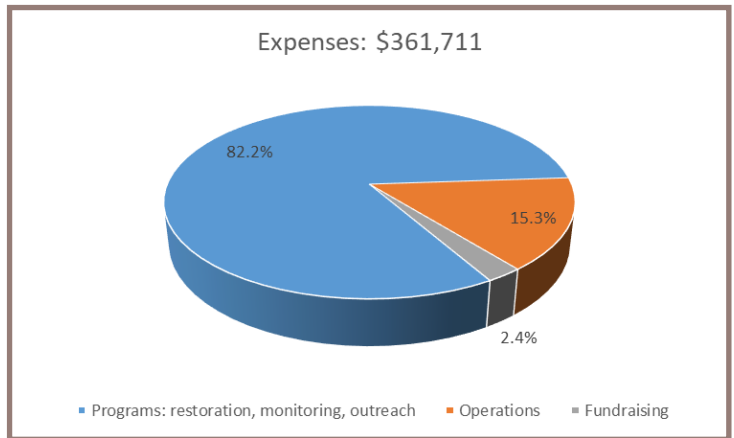
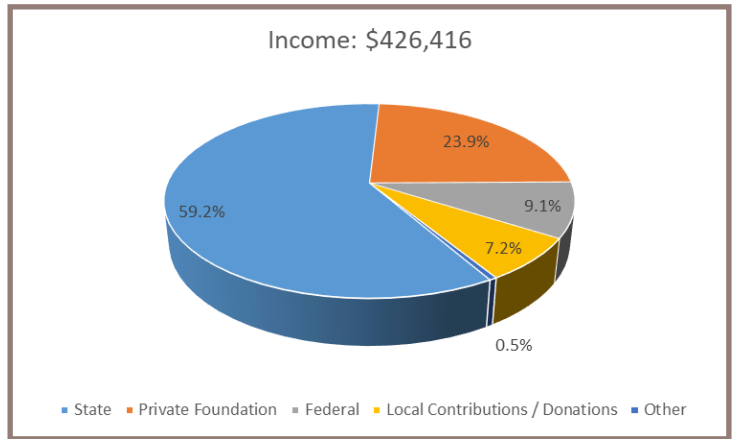
Income

State	\$252,592
Private Foundation	\$102,044
Federal	\$38,898
Local Contributions / Donations	\$30,720
Other	\$2,163
Total Income	\$426,416

Expenses

Programs: restoration, monitoring, outreach	\$297,402
Operations	\$55,453
Fundraising	\$8,856
Total Expense	\$361,711

Income - Expense	\$64,705
-------------------------	-----------------



Values based on data reported in the IRS form 990.

State and Federal Funding Sources: Oregon Watershed Enhancement Board, Bonneville Power Administration, Oregon Department of Environmental Quality, Oregon Parks and Recreation Department

Private Foundations and Other Grant Funding Sources: Meyer Memorial Trust, Oregon Community Foundation, The Ford Family Foundation, Spirit Mountain Community Fund, Siletz Tribal Charitable Contribution Fund

Local Partners: Ash Creek Water Control District, City of Independence, City of Monmouth, Hancock Timber Resource Group Clients, Polk Soil and Water Conservation District, Central Lions Club, Boy Scout Troop #38, SOLVE

Organizations & Businesses (cash or in-kind donations): One Tree Planted, McMenamins, Mattress World NW, Croft Vineyards, Elegant Catering, Ilahe Winery, Maps Community Foundation, Burgerville, Haugen's Galleri, Little Luckiamute Creekside B&B, Hazelton Farms, MaMere's Guest House, Trammart, Inc., Airlie Farm, Anahuac Produce, Blue Heron Farms, Golden Valley Farms, LLC, Starker Forests, Inc., WOU Athletics, WOU Wolf Store, Kroger Co. / Fred Meyer Community Rewards, The Bread Board, Mungo Marketing, Rogue Foundation, Goodfoot Farm, The Art of Massage, Rose and Ram Knit Shop, The Boondocks, Petals and Vines, Awaken Life Coaching, LLC, Independence Nursery and Water Gardens, Main Street Ice Cream, Redgate Vineyard, The Time Wizard, Treos Winery, Western Skies Ranch, C Street Salon, Independence, Cinema, Airlie Winery, Emerson Vineyards, The Naughty Noodle, Eola Hills Winery, Jennifer Russell - Massage Therapist, Pink House Café, B Keeper's Daughter, Mangiare Italian Restaurant, Dancing Oaks Nursery and Gardens, Hadley's Radio Bakery, Mecanico, AmazonSmile Foundation, Rick's Place, PayPal Giving Fund

Individual Contributions (cash or in-kind donations): Dave & Sarah Ehlers, Chris & Lisa Jaramillo, Jack & Marilyn Platt, Judith Street, Jerry Chiappisi, Jackson Stalley & Emily Plec, Gail & Tremaine Arkley, Mark Hazelton & Evelyn Hukari, Judith Maule, David & Heidi Schmidt, Thomas Hewes II & Audrey Perkins, Sarah Karr & Dave Hibbs, Herb & Linda Crew, Dan & Kathy Farnworth, Sean Hathaway, Lori & Brandon Reed, Hollis Fishelson-Holstine & Charles Holstine, Gerald Weisensee, Sally Morris, Wendy Hudson, Steve Milligan, Steve Scheck, Michael Cairns & Gail Oberst, Cliff & Gay Hall, Chris & Kathy Jensen, Patrick & Andrea Melendy, Karin & Terry Stutzman, Henry Hughes, Paul & Rose Landry, Ron & Ingrid Cooper, Barbara Dowe, Barb Gibbs, Gary & Kathy Larson, Kristen Larson & Tom Wilson, Heather Medina-Sauceda, Janet Parke, John & Sandra Potter, Jaysen & Sylvia Ridout, Ric & Lisa Trauernicht, Nadine & Steve Grubb, Laurel Sharmer, Sarah Uebel & Brett Reistad, Judy Beebe, Timothy & Brenda Taylor, Debra & Rick Chambers, David & Peggy Clyne, Mark Henkels & Marcella Dupler Henkels, Paul Hunt, Danny Jaffer, Deb Merchant, Mike Moon, Stacy & Peter Moore, Kathy Patterson, Sandra & John Revell, Ramona Russell, Jack Rye, Margaret Stephens, Lisa Ede, Carol Reams, Gloria & Tom Wilson, Eileen & David Maxfield, Ron & Kathy Kelemen, and Anonymous Donors

Thank you very much to all our donors, funders, volunteers, and partners. We could not achieve our goals without you!



Luckiamute Watershed Council

Email: director@LuckiamuteLWC.org
 Web: www.LuckiamuteLWC.org

165 D Street
 Independence, OR 97351
 Tel: (503) 837-0237

**YOUR LAND. YOUR RIVERS.
 YOUR COMMUNITY. YOUR WATERSHED.**