

About the LWC



Who are we?

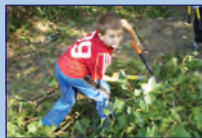


The Luckiamute Watershed Council (LWC) is a nonprofit, community-based organization that works to improve and protect water quality and habitat in the Luckiamute and Ash Creek watersheds. Learn more by attending one of our monthly meetings, which are held every second Thursday of the month at 6:30pm and are always open to the public. Find out more at www.LuckiamuteLWC.org

What do we do?

We work with our partners to restore the health of our rivers and landscapes, by...

- ✓ *Planting native vegetation*
- ✓ *Removing invasive weeds*
- ✓ *Improving fish and wildlife habitat*



We connect our local communities with the beautiful natural areas that surround us, by...

*Organizing project tours, workshops, and events that engage and inspire people to take action at home and in their communities towards a **healthy watershed for all!***



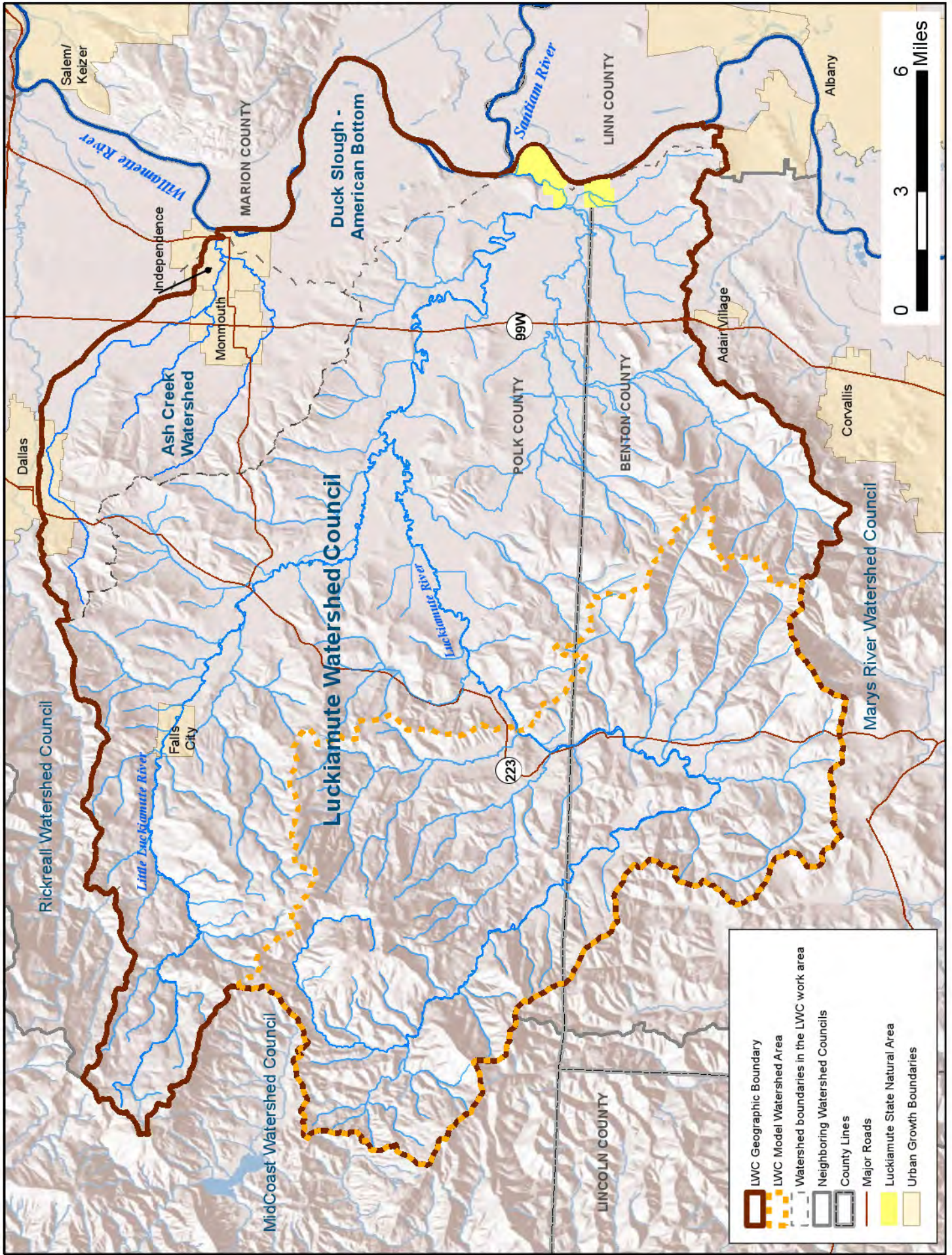
Where do we work?

The LWC service area is about 366 square miles, and includes the Luckiamute and Ash Creek watersheds, American Bottom and several small sloughs that drain directly into the Willamette River (**see map on back**). Our service area includes Dallas, Monmouth, Independence, Falls City, Kings Valley, Bridgeport, Hoskins, Pedee, and the surrounding rural communities.

For more information, call 503-837-0237 or email Outreach@LuckiamuteLWC.org

Your Land. Your Rivers. Your Community. Your Watershed.

Luckiamute Watershed Council
165 D Street
Independence, OR 97351
www.LuckiamuteLWC.org



- LWC Geographic Boundary
- LWC Model Watershed Area
- Watershed boundaries in the LWC work area
- Neighboring Watershed Councils
- County Lines
- Major Roads
- Luckiamute State Natural Area
- Urban Growth Boundaries



Salem/Keizer
 Independence
 Monmouth
 Dallas
 Ash Creek Watershed
 Falls City
 Little Luckiamute River
 Luckiamute River
 Duck Slough - American Bottom
 Sauttiam River
 Adair Village
 Corvallis
 Marys River Watershed Council
 MidCoast Watershed Council
 Rickreall Watershed Council
 LINCOLN COUNTY
 POLK COUNTY
 BENTON COUNTY
 LINN COUNTY
 Marion County