



## Luckiamute Watershed Council

[www.LuckiamuteLWC.org](http://www.LuckiamuteLWC.org)

### LWC Mission:

To engage and assist landowners and communities in the voluntary protection, restoration and enhancement of the Luckiamute and Ash Creek watersheds.

### What we are:

The Luckiamute Watershed Council is a volunteer, nongovernmental, advisory group composed of stakeholders living or working in the Luckiamute and Ash Creek watersheds.

### Council meetings:

Held the second Thursday of every month at 7 p.m., Visit our website at: [www.LuckiamuteLWC.org](http://www.LuckiamuteLWC.org) for location and details. Meetings are open to the public. Please join us!

### Events:

Join us on January 24 at Monmouth Burgerville from 5 to 8pm, for a [Partnership Night](#) event!



Spring is just around the corner, and your Soil & Water Conservation Districts are gearing up for their native plant sales!

**Details on page 4**



Look inside for the latest news about all the events coming to a venue near you!

## Partnership Helps Restore Wolf Creek Habitat



*Prior to starting restoration activities, Project Manager Jean-Paul Zagarola prepares for fish salvage. —photo by Kristen Larson*

— by Suzanne Teller, Outreach Coordinator

Whether in the form of financial support, donated time and materials, or on-the-ground volunteers, our watershed enhancement projects can only be successful with the dedication and involvement of many stakeholders.

For Wolf Creek, a small tributary that joins the upper Luckiamute River in the foothills of the Coast Range, an innovative partnership between the LWC, the Bureau of Land Management (BLM), and a private timber company helped boost its habitat value for native fish. Add in the help of volunteers and a Christmas Tree farm and the project is an excellent example of helping hands coming from many corners of our watershed.

Starker Forests is a 5th generation, family-owned timber company with a long history of proactive forest management. Starting in 1936, T.J. Starker invested in second-growth and harvested forestland that

nobody else wanted. Eighty years later, those investments are paying off. Today, Starker Forests has over 87,000 acres of prime Western Oregon timberland, with 16,000 acres in the Luckiamute watershed. Following in the footsteps of its founder, Starker Forests is making decisions that keep the long-term goals of sustainability and ecosystem health in mind.

Located far in the northwest corner of the watershed, the Wolf Creek sub-basin includes BLM lands, Starker properties and other privately owned timberlands. Wolf Creek meanders through its floodplain before joining with the Luckiamute River as it curves around Bald Mountain. Here in the upper reaches of our watershed, the water quality is relatively high — seemingly perfect habitat for native fish.

However, as with many in-stream obstacles, the barrier to fish in Wolf Creek is hidden to the untrained eye.

The culvert is just 400 feet from the confluence of Wolf Creek and the Luckiamute River, beneath Valsetz Road. Along this lower portion of Wolf Creek, the streambed upon which the culvert is perched has been almost entirely scoured down to bedrock. This scouring may be the result of various factors, but there are clues to some of the causes. Old, large stumps indicate a legacy of

*Continued on page 2*

## *Wolf Creek, continued from page 1*

historical logging of large conifers near the creek's edge. It's also possible the creek's channel was re-routed during construction of the road, artificially straightening the channel to simplify construction. These past practices are no longer allowed but their legacy lives on in many of our streams. The solid, slick surface of basalt and siltstone rock makes life hard for juvenile steelhead and cutthroat who rely on the nooks and crannies of streambed gravels and large wood to find food and hide from predators. Large wood in the stream channel helps boost habitat quality for fish by slowing water velocity, creating riffles, allowing gravels to settle to the stream floor, and giving juvenile fish the perfect place to seek food and refuge. This complexity in the channel also creates pools, which give young fish the space they need to prepare their "jump" upstream into a slightly perched culvert.

With the cooperation and expertise of a fish biologist and hydrologist with the BLM, a plan was put in place to make the culvert usable by juvenile fish, and allow them access to high quality fish habitat and cooler water temperatures upstream. The project utilized over 70 logs from roadside hazard trees on BLM lands for the large wood structures that were placed upstream and downstream of the culvert. Noble Mountain Tree Farm donated culled Christmas trees from their Bethel Heights farm to enhance the large wood structures. Additionally, a graded riffle was constructed to address the barrier created by the culvert, and allow for silts and gravels to settle and create a natural stream bottom both inside and outside the culvert pipe. After construction was completed, Starker Forests dispersed native seed and straw to minimize erosion. As a final step, the project partners and LWC volunteers planted 98 conifers along Wolf Creek's streamside corridor. These seedlings will create the large wood of the future after the placed logs have decayed and worn away.

Throughout this process, the landowner — Starker Forests — played a key role in the success of this project. Many of our fish habitat improvement projects require us to solicit grant funding to cover the costs of in-stream restoration activities. However, BLM and Starker's support of the Wolf Creek project allowed the LWC to reallocate resources from seeking funding

opportunities towards the quick and successful completion of this project. Meyer Memorial Trust funds supported the staff time for project coordination. Starker provided assistance with permitting, project oversight, rock material, extra logs to complete the structures, and funded the operator time for the placement of the riffle and large wood structures. Starker's active involvement in every step of the process reveals how this timber company sees their role — not only as landowner, but also land steward.

Thanks to partnerships like this one, our team of dedicated staff and contractors, our committed landowners, volunteers, and our federal, state and local partner agencies, we are restoring our local landscapes and opening up new habitat for our most iconic native species — one creek at a time.



*Above: Wolf Creek before the project, looking towards the confluence from the culvert crossing. Note the deep channel and lack of wood or large rocks in the channel.*

*Below: Same location, post-project. The graded riffle will create a jump pool for small fish migrating upstream through the culvert and the logs will improve fish habitat.*



## Successional Planning Workshop Series



**\*\*There's still time to register!\*\***

\$50 per family (up to 5 people)\*

**Orientation: January 17, 2017 @ 9am—12pm**

**Work Sessions: February 28, 2017 @ 9am—4pm**

*\*Cost includes Planning Workbook and food!*

Presenters from: OSU's Ties to the Land, Green Belt Land Trust, Farm Credit Services and attorneys specializing in conservation, farm, and ranch estate planning.

**For more details and to register, please visit <http://www.polkswcd.com/success.html>**

## Beneficial Insects for Willamette Valley Crops Workshop



Got pests? Require pollination?  
Soil in poor shape? Then you  
need beneficial insects!



Thursday January 12th 2017  
10 AM-3 PM  
Registration starts at 9:30 AM

OSU Extension Service  
289 E Ellendale Ave., Suite 301  
Dallas OR 97338



Learn about:

- FREE services of beneficial insects
- How to tell friend from foe
- Financial & technical assistance available



Limited space! Register with Polk SWCD at 503 623 9680 x 101, or online at [www.polkswcd.com/bugs.html](http://www.polkswcd.com/bugs.html)



United States  
Department of  
Agriculture

Natural Resources Conservation Service



Oregon  
Department  
of Agriculture



Extension Service

### About the LWC

The Luckiamute Watershed Council is comprised of volunteer watershed residents who care about the health of the watershed. Current members represent interests ranging from farming and forestry to education and water resources.

The Council is recruiting new board members and seeks individuals who work, live, or play in the watershed—you are a watershed stakeholder! Click [here](#) for details. We also welcome donations to support the work of the Council. All charitable donations will be used towards building the organizational resources needed to address our goals of water quality enhancement, habitat restoration and community education.

To donate, go to [www.LuckiamuteLWC.org/donate](http://www.LuckiamuteLWC.org/donate) or you can send a check to: **226 S. Main St. Suite L, Independence, OR 97351**

Thank you to our supporters!

### Upcoming Council Meetings

Join us for Council Monthly Meetings, held the second Thursday of each month at 7 p.m. Our meetings are always open to the public and discussion topics include local watershed issues and actions. For details, please visit our web site at [www.LuckiamuteLWC.org](http://www.LuckiamuteLWC.org).

**January 12, 2017:** Volunteer Hall, Monmouth

**February 9, 2017:** Volunteer Hall, Monmouth

**March 9, 2017:** Location TBD

**April 13, 2017:** Location TBD

*\*Your contribution may be tax-deductible. The Marys River Watershed Council will provide a letter of documentation early next year, following your donation.*

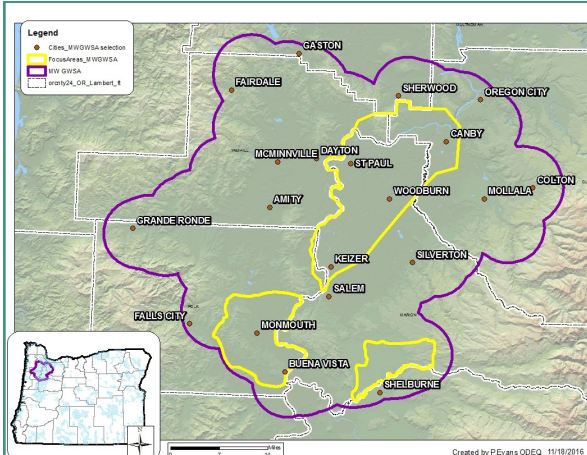
*\*\*As our fiscal sponsor, the Marys River Watershed Council maintains the right to redirect funds if the LWC does not comply with our agreement or applicable laws.*

## Soil and Water Conservation Districts to Hold Annual Native Plant Sales

Winter weather may be in the forecast, but it is also the right time to plan for the Spring planting season! Your local Soil and Water Conservation Districts are gearing up for the season by holding their annual native plant sales. Don't miss out on the opportunity to get native trees, shrubs,

grasses and forbs in the ground for the lowest prices around. Whether you are interested in erosion control, windbreaks, wildlife habitat enhancement, or simply the beautification of your yard, make it one of your priorities for this coming year.

Key Dates	Benton SWCD <a href="http://www.bentonswcd.org">www.bentonswcd.org</a>	Marion SWCD <a href="http://www.marionswcd.net">www.marionswcd.net</a>	Polk SWCD <a href="http://www.polkswcd.org">www.polkswcd.org</a>	Yamhill SWCD <a href="http://www.yamhillswcd.org">www.yamhillswcd.org</a>
Pre-order Deadline	Mail-in: December 31 Online: January 31	N/A	January 20	February 24
Order Pick-up Day	February 25: 8am—2pm Benton County Fairgrounds Livestock Building	No preorders—all plants can be picked up at the Native Plant Sale (see below)!	February 4: 9am—12pm Polk County Fair Grounds	March 2 & 3: 9am—6pm March 4: 9am—3pm Yamhill County Heritage Center
Native Plant Sale (Overstock Sale)	February 25: 8am—4pm Benton County Fairgrounds Livestock Building	March 10: 10am—6pm March 11: 9am—1pm Bauman Farms, Gervais	February 4: 12—3pm Polk County Fair Grounds	March 2 & 3: 9am—6pm March 4: 9am—3pm Yamhill County Heritage Center
For more information	(541) 753-7208	Jenny Meisel (503) 391-9927 x312	Tom Wilson (503) 623-9680 x108	(503) 472-6403
Link to Native Plant Sale information	<a href="http://www.bentonswcd.org/programs/plant-sale">www.bentonswcd.org/programs/plant-sale</a>	<a href="http://www.marionswcd.net">www.marionswcd.net</a>	<a href="http://www.polkswcd.com/nps17.html">www.polkswcd.com/nps17.html</a>	<a href="http://www.yamhillswcd.org">www.yamhillswcd.org</a>



### DEQ Offers Free Well Testing in the Mid-Willamette!

Do you live in the Mid-Willamette Valley and own a well? The Oregon Department of Environmental Quality (DEQ) is offering free testing for a variety of contaminants as part of a groundwater resource study. If you would like more information and to find out how to be considered for this study, head to our website at [www.LuckiamuteLWC.org/deq-well-testing.html](http://www.LuckiamuteLWC.org/deq-well-testing.html)!



*Your Land. Your Rivers. Your Community. Your Watershed.*

### Luckiamute Watershed Council

226 South Main St., Suite L  
Independence, Oregon 97351

Phone: 503-837-0237

[www.LuckiamuteLWC.org](http://www.LuckiamuteLWC.org)

Council Coordinator: [Kristen Larson](#)

Outreach Coordinator: [Suzanne Teller](#)

Project Manager: [Jean-Paul Zagarola](#)

Monitoring Technician: [Hannah Buleza](#)

Operations Assistant: [Terri Croft](#)